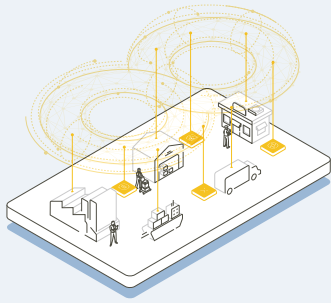


**Transporeon** is the Transportation Management Platform, that empowers shippers, forwarders, carriers and retailers to move, manage and monitor freight in a world in motion.



### The Platform

**Serves the entire industry**

Shippers, retailers, forwarders & carriers

**is multipurpose**

From procurement over Visibility, complex shipments to auditing and carbon emissions.

**is multimodal**

Covers all modes of transportation



We don't provide just software. We offer a platform.



**Network**  
A high density network to move, manage and monitor freight.

**Real-Time Applications**  
Modular applications covering the whole transportation management process

**The Platform**  
All of this is built on a highly scalable, reliable and secure cloud platform.

- Freight Sourcing**  
A structured and scalable way to source the right partners.
- Transport Execution**  
Move more freight and worry less
- Dock & Yard Management**  
Bring order to dock, warehouse and yard.
- Freight Audit & Payment**  
Automate your billing and be on top of freight spend
- Sustainability**  
Track, report and manage your carbon emissions.
- Insights**  
Always be one step ahead.
- Visibility**  
Visibility as a companywide feature

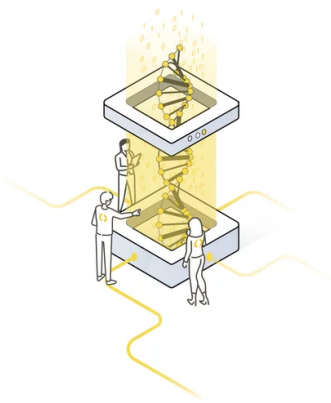


## Automate: Putting data to work

Tap into valuable data streams and automate your workflows. Transporeon's platform uses AI and machine learning to improve the accuracy and efficiency of complex logistics, enabling your people to focus on what people do best: service and strategy.

## Real Time Insights: Information at the speed of business

Give your logistics team the insights they need to make timely and informed decisions throughout the whole process of managing transportation logistics.



## Collaborate: one connected information flow

Moving freight is a collaborative effort. Transporeon's platform is designed to connect all partners and enable seamless real-time information sharing. We represent a true shift from the concept of connectivity, to fully realised interoperability. No more copying from one system to the other.

### FAQs

#### How can I get started?

You can simply select the solution you would like to use, and our team will help you and your network complete the onboarding process.

#### What application should I start with?

The decision is yours! We recommend making a choice based on your company's specific needs. The Transporeon platform is modular, so it's simple to select, mix and match the solutions that will help you the most. You can add more modules whenever you like.

#### What is the advantage of a logistics platform?

The Transporeon platform connects all participants in the supply chain. This capability helps to solve the challenges between companies wherever they arise.

#### Can I also start with an individual setup?

Yes! Talk to our team for a personalised conversation and support with mapping our solutions to suit your needs.

#### How do I onboard my carriers to the platform?

Our network already includes 158,000 carriers, so it's highly likely that many of your carriers are already using Transporeon. For those not yet onboarded, you can refer to our dedicated team to support them with becoming part of our network.

#### How does Transporeon support me?

Transporeon has a dedicated team to provide support in all European languages. Our customers rate our support services at 4.5/5.

## Want to find out more?

[Visit our website](#)